



Newly Developed Resources Available

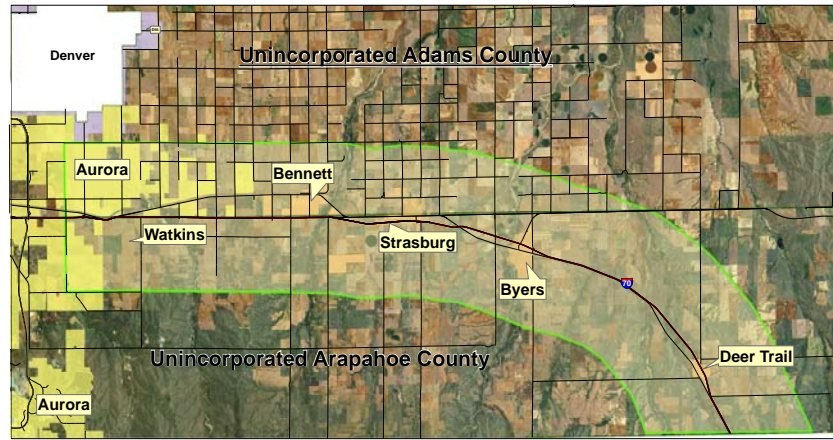
Whether you're a business looking for a new location or a resident interested in learning more, the following resources are available at www.i-70reap.com, or you can request a CD by calling 720-874-6650:

- **I-70 Corridor Map:** Cites the known locations of communities, infrastructure, transmission lines, roadways, parks, open spaces and points of interest.
- **I-70 Corridor Proposed Map:** Consolidates "proposed" upgrades, relocations or additions to rail lines, roadway and utility infrastructure, transmission lines and developments, identified through various public and private stakeholders in the corridor.
- **I-70 Corridor Demographic Summary:** A 2009 report quantifying demographic data specific to the corridor's Census and projected population numbers and characteristics, numbers and types of households, educational attainment and other characteristics often requested by businesses investigating a new location.
- **Strasburg & Byers SubArea Plans and Community Needs Assessment Surveys:** SubArea Plans are community-specific planning tools for unincorporated communities adopted as elements of a jurisdiction's Comprehensive Plan. Recent community needs assessment surveys also were completed and are available for review.

These resources support planning for the future, and each community may choose to use them in a variety of ways, such as updating Comprehensive Plans and amending Zoning and Land Development Codes.

"We are excited to support these community priorities and determine what needs to be done to help the I-70 corridor reach its full potential."

– Arapahoe County Commissioner Chair Rod Bockenfeld



How You Can Get Involved

- Attend REAP monthly meetings to learn more about the corridor's economic well being and how you can strengthen your business. Visit www.i-70reap.com to learn more.
- Contact REAP, Arapahoe County or Adams County to participate in the Economic Assessment/Study.

Contact Us

Regional Economic Advancement Partnership
303-644-4607, admin@i70ccoc.com, www.i-70reap.com

Adams County Long Range Planning
303-453-8805 or snerger@co.adams.co.us

Arapahoe County Long Range Planning
720-874-6657 or jiturreria@co.arapahoe.co.us

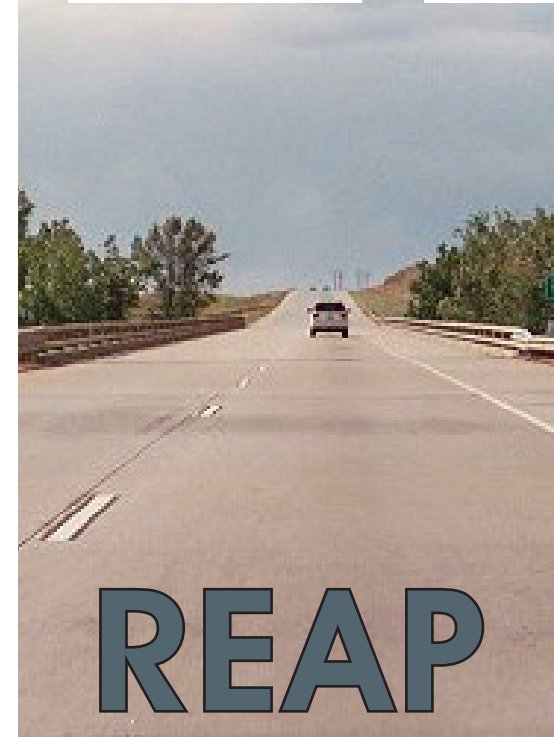
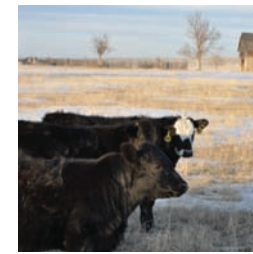
Partners

REAP, Arapahoe County, Adams County, City of Aurora, Town of Bennett, Town of Deer Trail and the unincorporated communities of Watkins, Strasburg and Byers.

www.i-70reap.com

I-70 Corridor Economic Assessment

Determining the Right Amount of Economic Development along the I-70 Corridor



REAP





Overview

Communities along the eastern I-70 Corridor of Arapahoe and Adams Counties are uniquely different from the Denver Metro Area. During recent surveys, residents shared their appreciation for the friendly, rural way of life of Byers and Strasburg while also identifying their priorities and concerns.

Survey results showed that residents want to continue to build upon the good quality of life and improve the sense of community. A key priority was to focus on economic development and employment opportunities locally, while maintaining a balance between providing the necessary services and amenities that residents desire while preserving the small town, rural atmosphere.



Process

To create a regional, eastern I-70 corridor framework that maintains its rural identity, but also encourages the right amount of economic development that will improve infrastructure, create local jobs (inviting our youth to start their careers near home) and contribute to a sustainable economy, the Regional Economic Advancement Partnership is working with Adams County, Arapahoe County, Aurora, Watkins, Bennett, Strasburg, Byers, Deer Trail, and the many business partners and residents of the corridor.

Over the past year, this coalition has worked to collect and plot data that will help to identify opportunities and constraints for future development and provide tools to market the corridor.

To build on these efforts, Arapahoe County has hired *Economic and Planning Systems, Inc.* and *Vision Land Consultants, Inc.* to conduct an Economic Assessment in 2010 that communities can use to develop their own plans.

The study covers the area from Air Park Boulevard along I-70 to the Elbert County line and extends four miles on each side of I-70.

Goals

- Identify and build upon the corridor's strengths
- Identify and resolve infrastructure gaps to position the corridor for increased business opportunities that benefit corridor communities
- Determine what type of economic development will be most successful that also keeps with the unique character of the communities
- Establish a vision for the corridor that identifies actions local communities can take toward making the corridor more competitive in the marketplace



“Our mission is to stimulate private investment in order to increase opportunities for employment, expand the tax base, broaden the economy and generally improve the quality of life for our citizens.”
– Wil Chase,
Chairman, REAP

“Adams County is projected to be the fastest growing county over the next decade and much of this new growth could occur along the I-70 corridor within Adams County. This plan will help identify opportunities which can maintain the important balance between agricultural values and quality development while enhancing the characteristics of each community.”
– Adams County Commissioner Chair Alice Nichol

“If we are to attract the economic development critical for future growth, we need to provide infrastructure and a vision for the future. We must work together as a region to anticipate our needs and provide for them.”
- Bennett Mayor Sue Horn

“The I-70 corridor study will help us identify economic growth and development opportunities that support our residents’ needs and maintain our quality of life.”
– Deer Trail Mayor Frank Fields